

**Rocky Mountains
Cooperative
Ecosystem Studies Unit
(CESU)**



What are CESUs?

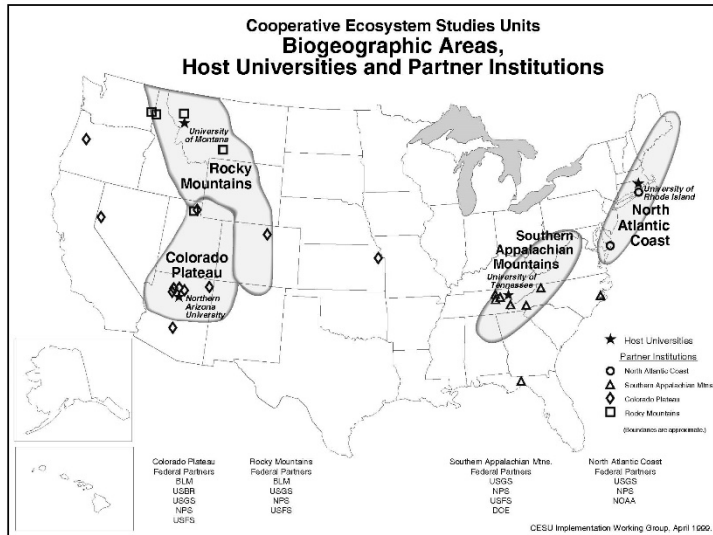
A nationwide consortium of Federal agencies, universities, conservation organizations, and other partners working together to support agency missions and informed public trust resource stewardship.

- **Anthropology to Zoology**
- **coordinated, collaborative, applied**
- **natural and cultural resource issues**
- **multiple scales**
- **ecosystem context**

CESU Network Objectives

- Provide usable knowledge to support informed decisions;
- Create and maintain effective collaborative partnerships among federal agencies, universities, and others to share resources and expertise;
- Take full advantage of university resources, while benefiting faculty and students;
- Encourage professional development of federal scientist, technical staff, and managers through substantial involvement in projects;
- Prepare future conservation professionals through direct involvement with real-life conservation issues and problem solving.

CESU Growth: 1999 to 2017

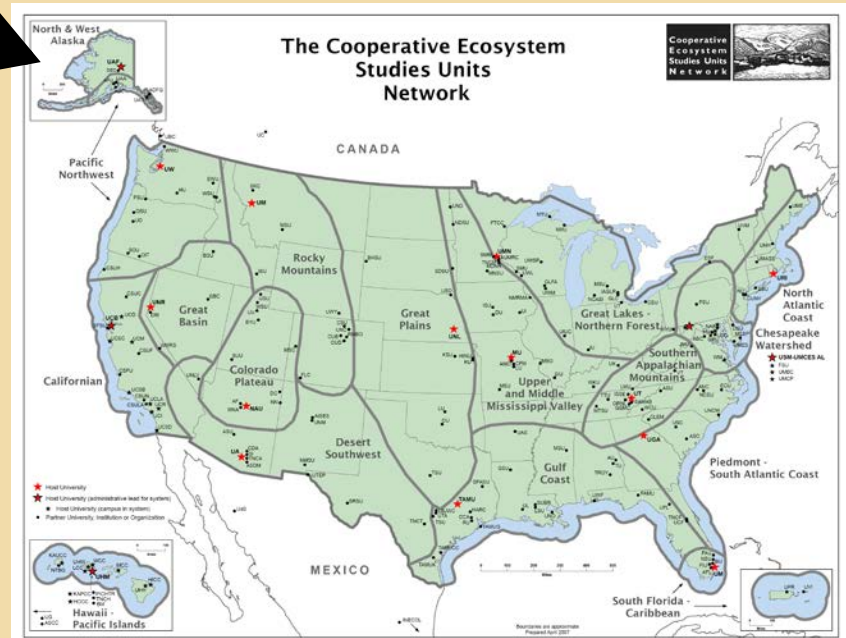


1999

- Four pilot CESUs established
- 7 Federal Agencies
- 30 universities

2018

- 17 CESUs
- 15 Federal Agencies
- < 400 Nonfederal Partners
- Since 1999, >10,000 projects involving over \$1B (est.)



Rocky Mountains CESU

The mission of the Rocky Mountains Cooperative Ecosystem Studies Unit is to improve and disseminate the knowledge base for managing natural and cultural resources in the rapidly changing social, cultural, and environmental landscape of the Rocky Mountain Region, and to extend its expertise to national issues where appropriate.

Federal Partners

National Park Service 1999
Bureau of Land Management 1999
US Geological Survey 1999
US Forest Service 1999
Bureau of Reclamation 2004
Natural Resource Conservation Service 2004
US Army core of Engineers-Civil Works 2008
Office of Deputy Under Secretary of Defense (Installations and Environment) 2009
US Fish and Wildlife Service 2009
Bureau of Indian Affairs 2017

Nonfederal Partners

University of Montana (Host)1999
Montana State University1999
University of Idaho1999
Utah State University1999
Washington State University1999
Salish Kootenai College1999

University of Wyoming 2002
University of Colorado Boulder 2002
University of Colorado Denver 2002
Colorado State University 2004
University of Northern Colorado 2006
University of Calgary 2007
Metropolitan State University of Denver 2011
Little Big Horn College 2012
University of Utah 2012
Northwest College 2012
Blackfeet Community College 2014
Chief Dull Knife College 2014
University of Waterloo 2014
Wildlife Conservation Society 2014
Boise State University 2016
Western State Colorado University 2016
University of Denver 2017
Front Range Community College 2017
Western Association of Fish & Wildlife Agencies 2018
Center for Large Landscape Conservation 2019

CESU Agreement: How do Projects Happen?

- ❖ **Agency has need that is filled by university/NGO expert**
- ❖ **University researcher has an idea...finds agency partner**
- ❖ **RM-CESU Executive Committee initiates a project and works on it together**
- ❖ **Cooperative Agreement- involvement of all parties**
- ❖ **Negotiated indirect rate: 17.5%**

Success of RM-CESU:

	First Five Years 1999-2004	Second Five Years 2005-2009	Third Five Years 2010-2014	Fourth Five Years 2015-2019
Federal Partners	4	8	9	10
Non-Federal Partners	9	11	20	26
Number of Task Agreement	299	935	1,104	893
Project Funding	\$16.2M	\$58.4M	\$94.7M	\$101M

Success cannot be measured in project #s alone:

- Learning about each other through our Executive Committee/Managers Meetings and outreach visits to campuses and workstations.
- Participation in partner workshops and training opportunities.
- Projects between CESU partners, but using other mechanism to transfer funds.

RM-CESU Student Award

The RM-CESU Student Award program was established in 2007 as a way to recognize outstanding accomplishments by students involved in RM-CESU projects.



2018: Greg Chorak,
Montana State
University



2017: Robin Graham,
Utah State University



2016: Greg Wann,
Colorado State University



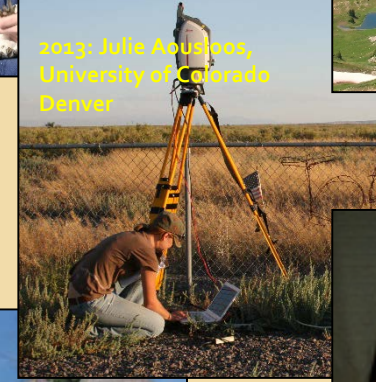
2012: Kristen Kaczynski,
Colorado State University



2017: Jeremy Sueltenfuss,
Colorado State University



2015: Matt Nelson,
University of Montana



2013: Julie Aoustaos,
University of Colorado
Denver



2018: Jesse Grace,
Colorado State University



2015: Colin May, University
of Montana



2014: Meghan
Forney, Montana
State University



2012: Nichelle Frank,
Colorado State University

Contact Information

Lisa Gerloff
Executive Coordinator, RM-CESU
406-243-6936
lisa.gerloff@umontana.edu

Brendan Moynahan
NPS Research Coordinator
and Science Advisor, RM-CESU
406-243-4449
brendan_moynahan@nps.gov

<http://www.cfc.umt/CESU>

